

Reed Pipes

Rental Fee Dolls Dress: \$35.00

Replacement Cost Dolls Dress: \$210.00

SIZE ORDERED: 4 MA



Your dancer has been placed in this routine with the expectation that they are able to fulfill the pointe obligation. If the dancer does not have pointe shoes for class she will be removed from all Nutcracker parts. Note: your dancer will be doing pointe multiple times a week and must have shoes, sewing kit, and all necessary accessories at the studio at all times. Rental fees and Showcase fees will not be refunded.

The Nutcracker will have a \$175.00 Showcase fee per dancer due on September 25th. This fee will cover all additional practices that are required to put on this show.

Main Part - Rental Fees will be due on September 25th. This fee will cover your costume rental. All dancers must have pink tights, pink slippers, and pointe shoes (if in pointe) for show. They must be in new condition for the December show. Dancers with worn or stained tights or shoes will not be permitted on stage.

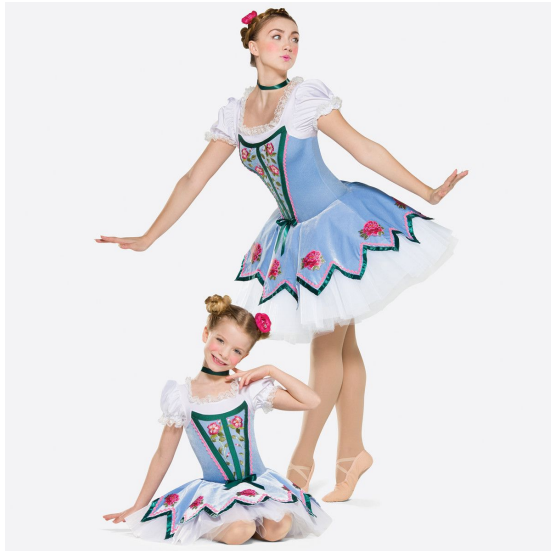
If costume and accessories are not returned to the studio in pristine condition following winter break your account will be accessed the replacement fee.

Dolls

Rental Fee Dolls Dress: \$38.00

Replacement Cost Dolls Dress: \$225.00

SIZE ORDERED: 2 MA



Your dancer has been placed in this routine with the expectation that they are able to fulfill the pointe obligation. If the dancer does not have pointe shoes for class she will be removed from all Nutcracker parts. Note: your dancer will be doing pointe multiple times a week and must have shoes, sewing kit, and all necessary accessories at the studio at all times. Rental fees and Showcase fees will not be refunded.

The Nutcracker will have a \$175.00 Showcase fee per dancer due on September 25th. This fee will cover all additional practices that are required to put on this show.

Main Part - Rental Fees will be due on September 25th. This fee will cover your costume rental. All dancers must have pink tights, pink slippers, and pointe shoes (if in pointe) for show. They must be in new condition for the December show. Dancers with worn or stained tights or shoes will not be permitted on stage.

If costume and accessories are not returned to the studio in pristine condition following winter break your account will be accessed the replacement fee.

Clara

Rental Fee Clara Dress: \$45.00

Rental Fee Pantalettes: \$25.00

Replacement Cost Clara Dress: \$270.00

Replacement Cost Clara Pantalettes: \$135.00

SIZE ORDERED: SA



Your dancer has been placed in this routine with the expectation that they are able to fulfill the pointe obligation. If the dancer does not have pointe shoes for class she will be removed from all Nutcracker parts. Note: your dancer will be doing pointe multiple times a week and must have shoes, sewing kit, and all necessary accessories at the studio at all times. Rental fees and Showcase fees will not be refunded.

The Nutcracker will have a \$175.00 Showcase fee per dancer due on September 25th. This fee will cover all additional practices that are required to put on this show.

Main Part - Rental Fees will be due on September 25th. This fee will cover your costume rental. All dancers must have pink tights, pink slippers, and pointe shoes (if in pointe) for show. They must be in new condition for the December show. Dancers with worn or stained tights or shoes will not be permitted on stage.

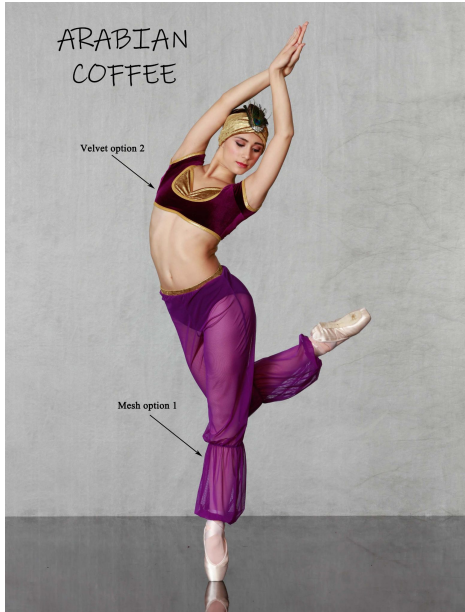
If costume and accessories are not returned to the studio in pristine condition following winter break your account will be accessed the replacement fee.

Arabian Coffee

Rental Fee Arabian Costume: \$45.00

Replacement Cost Arabian Dress: \$255.00

SIZE ORDERED: 2 SIZE MA



Your dancer has been placed in this routine with the expectation that they are able to fulfill the pointe obligation. If the dancer does not have pointe shoes for class she will be removed from all Nutcracker parts. Note: your dancer will be doing pointe multiple times a week and must have shoes, sewing kit, and all necessary accessories at the studio at all times. Rental fees and Showcase fees will not be refunded.

The Nutcracker will have a \$175.00 Showcase fee per dancer due on September 25th. This fee will cover all additional practices that are required to put on this show.

Main Part - Rental Fees will be due on September 25th. This fee will cover your costume rental. All dancers must have pink tights, pink slippers, and pointe shoes (if in pointe) for show. They must be in new condition for the December show. Dancers with worn or stained tights or shoes will not be permitted on stage.

If costume and accessories are not returned to the studio in pristine condition following winter break your account will be accessed the replacement fee.

Russian Trepak

Rental Fee Russian Dress: \$58.00

Replacement Cost Russian Dress: \$345.00

SIZE ORDERED: 2 SIZE SA/ 2 SIZE MA/ 2 SIZE LA



This is a soft shoe part. Dancers will wear ballet slippers.

The Nutcracker will have a \$175.00 Showcase fee per dancer due on September 25th. This fee will cover all additional practices that are required to put on this show.

Main Part - Rental Fees will be due on September 25th. This fee will cover your costume rental. All dancers must have pink tights, pink slippers, and pointe shoes (if in pointe) for show. They must be in new condition for the December show. Dancers with worn or stained tights or shoes will not be permitted on stage.

If costume and accessories are not returned to the studio in pristine condition following winter break your account will be accessed the replacement fee.

Spanish Chocolate

Rental Fee Spanish Dress: \$100.00

Replacement Cost Spanish Dress: \$900.00

SIZE ORDERED: MA



Your dancer has been placed in this routine with the expectation that they are able to fulfill the pointe obligation. If the dancer does not have pointe shoes for class she will be removed from all Nutcracker parts. Note: your dancer will be doing pointe multiple times a week and must have shoes, sewing kit, and all necessary accessories at the studio at all times. Rental fees and Showcase fees will not be refunded.

The Nutcracker will have a \$175.00 Showcase fee per dancer due on September 25th. This fee will cover all additional practices that are required to put on this show.

Main Part - Rental Fees will be due on September 25th. This fee will cover your costume rental. All dancers must have pink tights, pink slippers, and pointe shoes (if in pointe) for show. They must be in new condition for the December show. Dancers with worn or stained tights or shoes will not be permitted on stage.

If costume and accessories are not returned to the studio in pristine condition following winter break your account will be accessed the replacement fee.

Chinese Tea

Rental Fee Chinese Costume: \$55.00

Replacement Cost Chinese Costume: \$315.00

SIZE ORDERED: 3 SA



Your dancer has been placed in this routine with the expectation that they are able to fulfill the pointe obligation. If the dancer does not have pointe shoes for class she will be removed from all Nutcracker parts. Note: your dancer will be doing pointe multiple times a week and must have shoes, sewing kit, and all necessary accessories at the studio at all times. Rental fees and Showcase fees will not be refunded.

The Nutcracker will have a \$175.00 Showcase fee per dancer due on September 25th. This fee will cover all additional practices that are required to put on this show.

Main Part - Rental Fees will be due on September 25th. This fee will cover your costume rental. All dancers must have pink tights, pink slippers, and pointe shoes (if in pointe) for show. They must be in new condition for the December show. Dancers with worn or stained tights or shoes will not be permitted on stage.

If costume and accessories are not returned to the studio in pristine condition following winter break your account will be accessed the replacement fee.

Nutcracker



Your dancer has been placed in this routine with the expectation that they are able to fulfill the pointe obligation. If the dancer does not have pointe shoes for class she will be removed from all Nutcracker parts. Note: your dancer will be doing pointe multiple times a week and must have shoes, sewing kit, and all necessary accessories at the studio at all times. Rental fees and Showcase fees will not be refunded.

The Nutcracker will have a \$175.00 Showcase fee per dancer due on September 25th. This fee will cover all additional practices that are required to put on this show.

Main Part - Rental Fees will be due on September 25th. This fee will cover your costume rental. All dancers must have pink tights, pink slippers, and pointe shoes (if in pointe) for show. They must be in new condition for the December show. Dancers with worn or stained tights or shoes will not be permitted on stage.

If costume and accessories are not returned to the studio in pristine condition following winter break your account will be accessed the replacement fee.

Sugar Plum Fairy

Rental Fee Sugar Plum Dress: \$100.00

Replacement Sugar Plum Dress: \$315.00

SIZE ORDERED: 1 PA - 1 SM Platter



Your dancer has been placed in this routine with the expectation that they are able to fulfill the pointe obligation. If the dancer does not have pointe shoes for class she will be removed from all Nutcracker parts. Note: your dancer will be doing pointe multiple times a week and must have shoes, sewing kit, and all necessary accessories at the studio at all times. Rental fees and Showcase fees will not be refunded.

The Nutcracker will have a \$175.00 Showcase fee per dancer due on September 25th. This fee will cover all additional practices that are required to put on this show.

Main Part - Rental Fees will be due on September 25th. This fee will cover your costume rental. All dancers must have pink tights, pink slippers, and pointe shoes (if in pointe) for show. They must be in new condition for the December show. Dancers with worn or stained tights or shoes will not be permitted on stage.

If costume and accessories are not returned to the studio in pristine condition following winter break your account will be accessed the replacement fee.

Drosselmeyer

Rental Fee Drosselmeyer Suit: \$125.00

Replacement Cost Drosselmeyer Suit: \$500.00

SIZE ORDERED: SA



This is a soft shoe part. Your dancer will wear black ballet slippers and black tights.

The Nutcracker will have a \$175.00 Showcase fee per dancer due on September 25th. This fee will cover all additional practices that are required to put on this show.

Main Part - Rental Fees will be due on September 25th. This fee will cover your costume rental. All dancers must have pink tights, pink slippers, and pointe shoes (if in pointe) for show. They must be in new condition for the December show. Dancers with worn or stained tights or shoes will not be permitted on stage.

If costume and accessories are not returned to the studio in pristine condition following winter break your account will be accessed the replacement fee.

Mouse King

Rental Fee Mouse King: \$125.00

Replacement Cost Mouse King: \$1000.00

SIZE ORDERED: MA



This is a soft shoe part. Your dancer will wear black ballet slippers and black tights.

The Nutcracker will have a \$175.00 Showcase fee per dancer due on September 25th. This fee will cover all additional practices that are required to put on this show.

Main Part - Rental Fees will be due on September 25th. This fee will cover your costume rental. All dancers must have pink tights, pink slippers, and pointe shoes (if in pointe) for show. They must be in new condition for the December show. Dancers with worn or stained tights or shoes will not be permitted on stage.

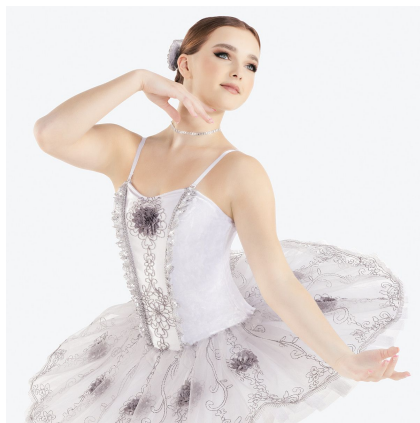
If costume and accessories are not returned to the studio in pristine condition following winter break your account will be accessed the replacement fee.

Snow Queen

Rental Fee Sugar Plum Dress: \$100.00

Replacement Sugar Plum Dress: \$410.00

SIZE ORDERED: 1 MA - 1 L/XL Platter



Your dancer has been placed in this routine with the expectation that they are able to fulfill the pointe obligation. If the dancer does not have pointe shoes for class she will be removed from all Nutcracker parts. Note: your dancer will be doing pointe multiple times a week and must have shoes, sewing kit, and all necessary accessories at the studio at all times. Rental fees and Showcase fees will not be refunded.

The Nutcracker will have a \$175.00 Showcase fee per dancer due on September 25th. This fee will cover all additional practices that are required to put on this show.

Main Part - Rental Fees will be due on September 25th. This fee will cover your costume rental. All dancers must have pink tights, pink slippers, and pointe shoes (if in pointe) for show. They must be in new condition for the December show. Dancers with worn or stained tights or shoes will not be permitted on stage.

If costume and accessories are not returned to the studio in pristine condition following winter break your account will be accessed the replacement fee.